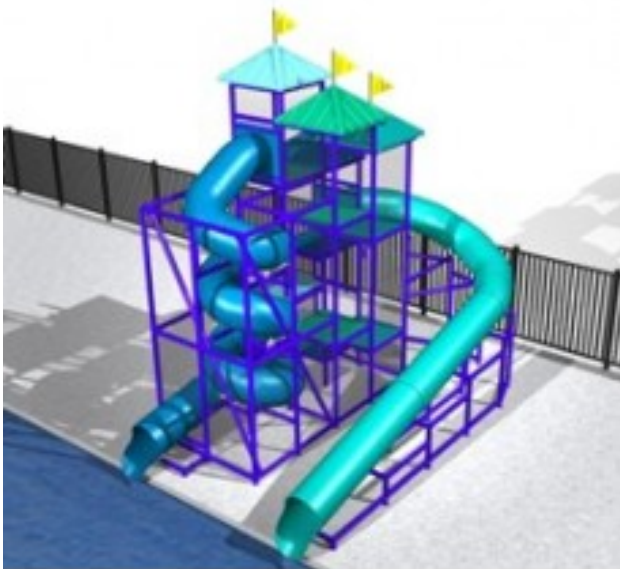


Water Slide Model 304 5792-0

<https://www.dunriteplaygrounds.com/store2/30648-304-5792-0-Model-304-5792-0>

Product Image



Description

Model 304 5792-0. 43' Flume (10' Deck Height), 48' Flume (16' Deck Height). Price does not include installation. Water Pump and water pump installation available (additional). Your site specifics may require changes or modifications to the structure, design, layout or installation requirements. Call for custom solutions, freight quote and unit pricing. DunRite Playgrounds provides both plastic slides and metal slides. A plastic slide may be used indoors or out, and is often popular for water, pool or lake. A metal slide is a durable and long lasting slide solution! Let us know how we may help you with the correct playground slides.

What do you remember from your childhood? Do you remember the play ground slides? Play slides are on the top of the list for kid choice play, right up there with a swing set. Did you have a slide for backyard play? Backyard playground slides or backyard swings recall some of our fondest memories of growing up. The playground slide and our school friends were truly “the good old days.”

Looking for a metal spiral slide for sale often results in a price tag of several hundred thousand dollars! Consider our patented and propriety LMA and FSS Series slides! Searching for spiral slides for playgrounds can be a daunting task, with more options than you want. A spiral playground slide (sometimes called a twist slide or twisted slide) is often the crowning jewel and the big kids end a play structure at the local school or park. If you don't have room for a

complete playground system, freestanding slides may be worth consideration. Don't try to find a spiral slide kit, this really isn't a do-it-yourself product. Playground slide dimensions contain lengthy and complicated factors to make safe and fun play. An affordable spiral tube slide is most likely going to be a plastic slide. A stainless slide isn't outrageous in price if it is a flat bedway, straight slide. Turns and curves are when a stainless steel slide becomes more expensive. The slide chute may create a curvy slide with slight or gentle turns like a veer right slide or veer left slide. Angles and turns may create a 90 degree tube slide, such as a left turn slide or right turn slide.

Keeping the price down may lead you to search for used metal slides for sale. Used and sale in the same sentence with slides are probably not a good idea when considering playground equipment. Someone getting rid of a slide should make you wonder if something is wrong with it! Watch out for an ad for a "used playground slide." A commercial slide may cost more than a residential slide due to thickness, dimensions and durability factors. Commercial slides are usually needed for any place other than your backyard treehouse slide. Residential playground equipment is typically manufactured with different materials and to different standards or specifications. A slide for playground use must meet higher standards and more restrictive guidelines. Stainless steel playground slides may also be used off of the playground, so don't let a name confuse your search. This means a metal kids slide may also be used for adults, as an adult slide.

Trying to find the right playground slide for sale could be a tough task. Let us simplify your slide search, how high is the deck? Start there! Custom playground slides don't cost more than a standard slide, we don't charge a premium to guide you. If you just want to know how to make a metal playground slide, you may end up missing some of the safety guidelines that an experienced manufacturer is familiar with. Don't forget playground shades. Playground shade will not only protect your children from direct sun, heat and harmful UV rays, but will also help protect your playground equipment.